

THE EVERGREEN

Historic Pine Grove . . . Early Settlers Noted the Area's "Fine Stand of Pines"

Vol. XV, No. 1 - Issued Quarterly

BOROUGH OF PINE GROVE, PA

February 2023

Council President Updates "State of the Borough"

Flood Remediation Continues; Pool Help Is Needed

As you read this issue of *The Evergreen*, we will be halfway through this winter and eagerly awaiting spring. This spring, we hope to complete an aggressive cleanup and beautification of our Borough.



TOM FICKINGER
Council President

We all remember the excessive water flowing along the west side of South Tulpehocken Street with the ice and traffic problems it caused. In the fall, we did a storm drain project to collect the water along the street and pipe it into the Swatara Creek.

There was an additional problem because the runoff from the Saint Peter's and Saint John's cemeteries - both large open areas - ran into the residential homes along South Tulpehocken.

The Borough was successful in procuring a grant to repair "infrequently used dirt roads."



The accompanying photo shows that the road has been re-sloped to force the runoff water back toward the cemetery and into a catch basin. A porous pipeline will then move stormwater into our storm drain system. This should ease surface and basement flooding in this area.

- Continued on Page 4



Help for Heating Bills

LIHEAP may be available to you

Residents struggling to pay home heating bills can apply for assistance from the Low-Income Home Energy Assistance Program (LIHEAP) now. This program runs until April 28, 2023.

The federally-funded LIHEAP program helps individuals and families pay their heating bills through home heating energy assistance cash grants sent directly to your fuel/utility provider. The program includes crisis grants should there be an emergency or if a resident is in danger of losing his or her heat due to broken equipment, lack of fuel, or termination of utility service.



The income limit for an individual is \$20,385; for a couple, the limit is \$27,465; and for a family of four, it is \$41,625. The grant award amounts vary from \$300 to \$1,000 depending upon income, fuel source, and household size.

Residents may apply for LIHEAP online or by contacting your County Assistance Office.

On the inside . . .

- Install/Test Smoke Detectors Pg. 2
- Len Clark Elects Retirement..... Pg. 4
- Still Winter - Be Safe & Warm.... Pg. 6
- Boro Services; Seasonal Tips..... Pg. 8
- Busy 2023 at Stanhope School.. Pg. 10

2023 BOROUGH OFFICIALS

Regular Council Meeting:
2nd Thursday of Each Month - 6 p.m.
Municipal Building - 1 Snyder Ave.

OFFICIALS

Mayor Willard Shiffer
 Chief of Police..... Thomas J. Trotter, IV
 President of Council..... Tom Fickinger
 Vice President of Council..... Leroy Bates
 Pro Tem..... Len Clark
 Secretary/Treasurer..... Melissa A. Dyer
 Tax Collector..... Sally Burke
 Solicitor..... Shane Hobbs, Esquire
 Engineer..... One Atlas
 Floodplain Admin. Light-Heigel & Assoc.
 EMA Coordinator..... Dave Sattizahn
 Code Enforcement..... Light-Heigel & Assoc.
 Health Officer Lew Moyer

COUNCIL

Leroy Bates • Skip Butler • Leonard Clark
 Thomas Fickinger • Elaine Holley
 Devin Lymaster • Vacancy

POLICE

Thomas J. Trotter, IV - Chief
 Mike Dissinger • William Gelgot
 Pete Mozurkevich • Gino Ricigliano
 Mark Vandermartin • Beau Yarmush

STREETS & WATER DEPARTMENT

Vacancy, Streets Supervisor
 Jacob Dinger • Robert Kolb
 Earl Kreiser • Zach Peters

BOROUGH OFFICE

Melissa A. Dyer
 Amanda Lutz • Mandy Miller

COMMITTEE ASSIGNMENTS

ADMINISTRATION, BUDGET & FINANCE

Thomas Fickinger • Leroy Bates
 Elaine Holley

PERSONNEL

Leroy Bates • Thomas Fickinger
 Elaine Holley

PUBLIC WORKS

Tom Fickinger • Len Clark

PROPERTY & NATURAL RESOURCES

Leroy Bates • Skip Butler • Elaine Holley

FLOOD MITIGATION

Len Clark • Thomas Fickinger • Skip Butler

COMMUNITY DEV. • PARKS & RECREATION

Len Clark • Leroy Bates • Devin Lymaster

PUBLIC SAFETY

Skip Butler • Elaine Holley

STORM WATER COMMITTEE

Leroy Bates • Len Clark • Tom Fickinger

Smoke Detectors Save Lives

Where should I install them?

A smoke detector should be installed on every level of your home. Since many home fires occur while the residents are asleep, smoke detectors should also be installed in every bedroom and in the hallway outside each sleeping area.



Detectors come in two types, hard-wired and battery operated. Hard-wired detectors are usually installed by an alarm service technician or by an electrician. Battery-operated detectors are the most common type and can be purchased in most hardware stores or department stores. They are easy to install. Most require inserting two screws into the ceiling or wall and some come with adhesive strips that stick to the surface.

Ceiling-mounted detectors should be positioned at least four inches from the nearest wall. Wall-mounted detectors should be placed four to twelve inches away from the ceiling. If you have peaked ceilings, install the detector near the ceiling's highest point.

Don't install detectors near doors, windows or ducts where drafts might interfere with the detector. Never paint smoke detectors or apply stickers or decorations, since these too may affect the ability of the detector to respond to a fire.



H. L. Snyder Funeral Home, Inc.

139 S. Tulpehocken Street • Pine Grove

Phone: 570-345-2266

- Family owned and operated, serving the area since 1915.
- 4th generation of providing funeral, cremation, memorial and graveside services.
- Pre-planning services available.
- Handicapped accessible; playroom area for children.

Dianne M. Snyder Zimmerman, Supervisor

Lisa A Harner, Funeral Director

www.hlsnyderfuneralhome.com

A tradition of excellence.



**Schuykill County's oldest and
largest full service law firm.**

.....



**Williamson,
Friedberg
& Jones**

(570) 622-5933

www.wfjlaw.net

POTTSVILLE

10 Westwood Rd
Pottsville, PA 17901

ORWIGSBURG

205 W Market Street
Orwigsburg, PA 17961

RAVINE

Route 125
Ravine, PA 17966

HEGINS

905 E Main & Park Lane
Hegins, PA 17938

Council President's State of the Borough Update

- Continued from Page 1



Schuylkill County provided funds to remove some very large trees that had jammed under the county bridge on East Wood Street (Rt. 895). We thank them for their assistance.

Two-and-a-half miles of piping needed

Grants are in the process to replace approximately 14,000 linear feet of main water supply line that delivers water from the wells in Echo Valley to the Chemical Building in Ravine.

The existing line is approximately 80 years old and was constructed above ground many years ago. It has reached the end of its useful life. A failure would directly affect our water supply.

The current permit will allow a new main sup-

ply pipeline to be installed underground along the PennDOT highway right-of-way along PA Rt. 125. Because this one pipeline is currently the only source of water to the Borough, we have drilled two additional wells in the Pleasant Valley area. The wells are complete and are awaiting approval for their use.

In the meantime, funds have been acquired to lay a pipeline along the Rt. 443 PennDot highway right-of-way. This temporary plan is to feed water to the residents who choose service from the town supply until permission to use the new wells is granted.

Len Clark retires; pool help needed

We have also had some personnel changes. Len Clark has elected to retire as our water supervisor and street supervisor. Thank you, Len, for your 15 years of dedicated service to Pine Grove Borough. The entire community wishes you well in your retirement.

In addition to his well-deserved retirement, Len will assist in training the new water crew while they obtain their certifications. We have advertised for a street supervisor - Len's replacement - to direct our Borough crew in these important services.

The Pool Committee is in the process of recruiting staff for the summer season at the Pine Grove Community Pool. Lifeguards and Snack Shack personnel should contact the Borough Office regarding summer employment.

Last year, the Committee received a number of requests for the pool to remain open longer through the swimming season. The main problem is that most of the staff returns either to school or college about mid-August. We would like to keep the pool open until Labor Day or later as the weather allows. Anyone in the Borough or area communities who are qualified and able to serve, please contact the Borough Office if you would like to help keep the pool open. The Borough wishes to provide a longer season, as the weather and swimmers will allow.

The Pool Committee is reviewing the fee structure for the coming swim season. But, as with anything else, a small increase looks probable. Follow the "Pine Grove Community Pool" link on the PineGroveBorough.org home page for updates as we get closer to swim season. More information will be published in the May issue of *The Evergreen*.

R&J TOURS - 2023

DAY TOURS

| | |
|--|--------|
| Mar. 30 - "My Mother's Italian" @ Tropicana; \$25 FSP | \$95 |
| April 1 - "Sister Act" @ Dutch Apple Dinner Theatre | **\$99 |
| April 5 - "Murder at Mount Hope Mansion" | \$89 |
| April 11 - "Four by Four" @ Wind Creek Casino; \$30 FSP | \$81 |
| April 15 - Washington DC Free Day | \$62 |
| April 22 - NYC Free Day..... | \$59 |
| April 27 - Kenny Rogers Band @ Tropicana; \$25 FSP | \$95 |
| May 6 - National Zoo | \$62 |
| May 6 - Phillies vs. Boston Red Sox..... | \$92 |
| May 7 - Peddlers Village Strawberry | \$39 |
| May 7 - Phillies vs. Boston Red Sox..... | \$87 |
| May 13 - "Grace for President" @ DADT..... | \$58 |

OVERNIGHT TRIPS (Prices Based on Double Occupancy)

| | |
|---|---------|
| April 16-18 - Tropicana Casino | \$258 |
| May 21-23 - Seneca Casino Trifecta..... | \$389 |
| May 30-31 - Frankie Valli Trib@Resorts World Catskills..... | \$197 |
| June 4-6 - Resorts Casino..... | \$316 |
| June 4-8 - Virginia Beach..... | \$612 |
| June 18-23 - Mackinac Island..... | \$1,998 |

** - Child Price Available

Check Our Website for Tour Info & Details



P.O. Box 69 • Cressona, PA 17929
570-385-4488 or 1-855-472-3734

LEHR'S FEED & FARM SUPPLY

SEE US FOR YOUR GARDENING NEEDS, FROM SOIL TO SEEDS, AND EVERYTHING IN BETWEEN. WE CARRY YOUR FAVORITE LEHR'S WILD BIRD MIXES RIGHT THROUGH THE FALL & WINTER MONTHS.



Frequent Buyer Cards (Get one bag FREE when card is filled) for our **Wildbird Feed** and **Shelled & Cracked Corn**. See store for details.

We have 7 Wildbird mixes - Backyard Blend; Fruit, Nut & Berry; Premium Blend; Cardinal Deluxe; Dove Blend; Finches Delight; and Woodpecker Fiesta - all formulated to not end up on the ground under your feeder.

Our Corn & Wildlife Grains are huge favorites among Wildlife enthusiasts.

10 Snyder Ave., Pine Grove, PA (570) 345-3309

Simple, Easy, Affordable

Direct Cremation

\$1,345



Why Choose Us?

Affordable Pricing That's Easy To Understand

There are no hidden charges. By using our innovative online planning system, you not only save money but also can select only the options you want. Our Simple Cremation includes basic services of the Funeral Director and Staff, completion of all paperwork, removal of the deceased from the place of death within a 30-mile radius, refrigerated storage up to three days, transportation to crematory, crematory fee, and OSHA-approved cremation container. Payment in full required.

Secure, Private, Dignified Cremations

Affordable doesn't mean low quality. We use our own private crematory. Your loved one will not be transported to a third-party facility and never leaves our care. We use a 10-step identification process to ensure the integrity of your loved one's remains. We maintain consistent standards and follow the strict guidelines set by the Cremation Association of North America (CANA) and the PA Dept. of Environmental Protection. Our technicians are individually trained and certified.

Cremation Society
OF
SCHUYLKILL COUNTY, INC.
Simple, Trustworthy, Economical.

25 East Main Street, Schuylkill Haven, PA 17972
570-593-8698 • Rebecca Deatrich Devlin, Supervisor

PREPLAN ONLINE: WWW.SCHUYLKILLCOUNTYCREMATION.COM

It's Still Winter! Be Smart – Stay Safe and Warm

When temperatures dip below freezing, it's important to take steps to prevent ruptured plumbing. Leave water dripping slightly so that water is constantly running through the pipes to reduce the chances of freezing.

Open the cabinets in which indoor pipes are housed so they are exposed to the warmer temperatures in your home. Outdoor pipes should be wrapped with sufficient insulation to reduce exposure to the elements. Never leave a hose attached to an outside faucet during the winter months.

Check smoke/CO detectors

Smoke alarms and carbon monoxide (CO) detectors save lives!

Every dwelling should have smoke alarms and carbon monoxide detectors on each habitable level of the dwelling. Every sleeping room should have a smoke alarm.

Basements/cellars with a solid fuel heating appliance should have a smoke alarm and carbon monoxide detector. Combination units are available and serve a dual purpose where both are needed.

Carbon monoxide is a colorless, odorless vapor that is sometimes produced by furnaces and space heaters. Symptoms of CO poisoning include nausea, dizziness, severe headache, confusion, and uncon-


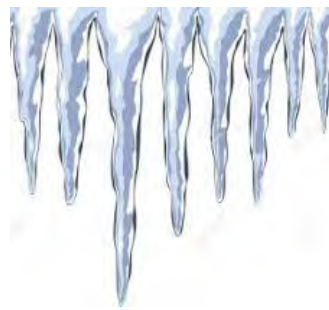
sciousness. If you notice these symptoms in yourself or a family member, go to the emergency room right away.

If you have a solid fuel heating appliance, use gas-powered space heaters, a kerosene heater, or have a fireplace, install carbon monoxide detectors in your home. If you already have detectors, test them regularly. Make sure they are in proper working order and change the batteries according to manufacturer's recommendations.

Clear snow and remove ice

Falls are the number one cause of injuries to adults. Reduce this risk for yourself and others in your neighborhood by clearing snow and ice from sidewalks, driveways, and walkways.

Keep these areas shoveled and free from debris. Simply clearing the snow may not be enough to keep the area safe. Ice is always a concern; so, apply sand or rock salt to slippery spots. Pay particular attention to stairs, since they can be hazardous and icy in colder months.



Plan Your Retirement

With our dedicated team of financial professionals

Learn More At
advisemint.co | 570.622.0602

advisemint
FINANCIAL PARTNERS

Lori Smith, CFP®, Tyler Smith, CFP®
Francesco Mercuri, CFP®, Allen Fidler



Try our Mobile App!

FREE Rx DELIVERY!

PINE GROVE PHARMACY
ALL TOGETHER HEALTHY

- Caring Professionals Who Listen
- Medication Synchronizing
- Special Medication Packaging
- Compounding Specialists
- Diabetic Supplies
- Wellness Products

570-345-4422
10 East Pottsville Street, Pine Grove, PA 17963
pinegroverx@gmail.com • PineGrovePharmacy.com

Winter Tips for Your Safety . . . from Pine Grove Borough

Safety tips when shoveling

Know if you shouldn't shovel. Some people, particularly if they've experienced heart, or other health concerns, should avoid shoveling snow.

Dress appropriately! Although it may be tempting to just run out and shovel the front walk in what you are wearing, you can prevent injury by dressing for conditions. Dress in layers so that you can remove some if you become too hot. Wear warm socks, a head covering, a scarf, and mittens or gloves. Wear waterproof boots with soles that are slip-resistant.



Before you begin shoveling, warm up your muscles for approximately ten minutes by doing stretches or other light exercises.

Choose the right shovel. Make sure your shovel fits your body size and strength. Too short makes you lean forward, risking back injury. Too long becomes awkward and more difficult to lift or push snow.

Shoveling form is important to avoid strain on your back muscles and spine. Lifting a shovel of snow should be done with your back straight, bending your knees and squatting down with your legs apart. Don't throw snow over your shoulder or to the side. Instead, keep your arms close to your body while carrying it to

where you want to place the snow.

Be careful with deep or heavy snow

Start removing the snow when the ground is lightly covered and keep clearing it often. This will avoid the accumulation of heavy, packed snow and allow you to push rather than lift. If you must lift the snow, don't overload the shovel. Remove it in layers.

Take a bottle of water with you when you go out to shovel. Drink regularly so that you don't become dehydrated as you work.

Don't overexert. Pace yourself, take breaks often, and go indoors frequently to warm up and rest your body. If you feel pain or pressure in your chest, call your doctor right away.

Watch for slippery areas, patches of ice, and areas that are uneven. Once the driveway has been cleared, consider sprinkling some rock salt on it. This will be helpful if the local forecast calls for freezing rain. The rock salt will help to melt ice and lower the risk of slipping.

Be prepared in advance of a storm

Gather the following items now, before you need them - a fully charged cell phone, battery-powered radio, flashlights and lanterns with spare batteries, drinking water, non-perishable food that doesn't require cooking; baby food and formula, if needed; pet food, prescription medications, and a first aid kit.

SPOTTS INSURANCE GROUP



Jeff Spotts
President



Schuylkill Haven
570-385-1911

Pine Grove
570-345-3252



Jeannie Fessler
Commercial &
Personal Lines
Account Executive

When you think insurance...think Spotts!



AUTO | HOME | LIFE | BUSINESS | FARM

spotts4insurance.com

Borough Services Update . . . And Seasonal Tips!

RAVE "Smart911" reminder

Just a reminder - Pine Grove Borough and Pine Grove Water Department utilizes the RAVE-Smart 911 automated services to notify our residents/customers of emergencies and water leaks.

If you are new to the area, please go onto our website at www.pinegroveborough.org. Click on the "RAVE-Smart 911" tab to sign-up for notifications and alerts. Note: this is only for Pine Grove Borough residents and Pine Grove Water Customers.

Also, if you change your phone number, email address or even move out of the area, please let us know of these changes so we have the most accurate information.

2023 pool season

The Pine Grove Community Pool is planning on opening for the 2023 season; but, in order to do so, we need your help!

**We are in need of lifeguards
in order to open the pool this season.**

Please check the Borough website at www.pinegroveborough.org and click on the Pine Grove Community Pool tab for more information.

Temporary signage regulations

Any person who places or hangs any type of sign

or notice upon utility poles, lamp posts, or other Borough property, including but not limited to yard sale signs, picnic advertising signs, or sports signs, must place that person's or representatives' name, address, and phone number upon the sign.

Any person who places or hangs such signs within the Borough limits must remove the sign within three (3) days following the event.

PPL owns and maintains the utility poles and forbids the use of nails or staples for the safety of its workers. Fines or other legal action will be levied against the individual and/or organization for violation.

Borough holiday closures

Pine Grove Borough offices and operations will be closed in observance of the following holidays in 2023: Friday, April 7 (Good Friday); Monday, April 10 (Easter, observed); Monday, May 29 (Memorial Day); Tuesday, July 4 (Independence Day); Monday, Sept. 4 (Labor Day); Monday, Oct. 9 (Columbus Day); Thursday and Friday, Nov. 23-24 (Thanksgiving); Friday (half day) and Monday, Dec. 25 (Christmas).

Dispose of unused/outdated drugs

Each year the Pine Grove Police Department coordinates the local DEA Drug Take-Back Program. This provides for the safe and secure disposal of expired and unused prescription drugs commonly

Moyer's Car Care

570-739-4477

Auto Parts & Service • 24 Hour Towing

102 South Rt. 183, Schuylkill Haven
www.MoyersCarCare.net

| | | |
|--|--|----------------------------------|
| <ul style="list-style-type: none"> • Replace Engines & Transmissions • Major Engine Repairs • Fuel Injection • Computer Diagnostics & Repairs • Brakes • Alignments | <ul style="list-style-type: none"> • Fleet Service • Tune Ups • Batteries • Quality Discount Tires • AC & Heating Repairs (including R-1234yf Systems) • State Inspection & Emissions Inspection | DISCOUNTS REWARDS |
|--|--|----------------------------------|

\$5⁰⁰ OFF

Any Purchase of \$30 or More

Additional cost on parts & labor may be required. See store for details. Not valid with any other offers. Exp. 3/31/2023

\$50⁰⁰ OFF

Purchase of Any 4 Tires & 4 Wheel Alignments

Not valid with any other offers. Exp. 3/31/2023

FOREIGN & DOMESTIC REPAIRS

FRESHNESS, QUALITY, SERVICE

BG's Value Market

Open Daily 7 a.m.-9 p.m.

Rt. 443 Pine Grove – 570-345-0464
(Across from Pine Grove Schools)

Kings Village, Minersville – 570-544-2099

WIC & Access Card Welcome
Money Orders 79¢

DOUBLE COUPONS EVERYDAY
SEE STORE FOR DETAILS

ONLINE STORE: thecakepros.shopsettings.com

323 Dock Street
Schuylkill Haven
570-593-8166

 216 N Rt. 183
Schuylkill Haven
570-739-7037

The Cake Pros &

Blessing Table Companies

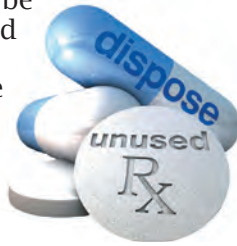
\$5 OFF a \$30 Order with this AD

Borough Services Update . . . And Seasonal Tips!

found stored in households. To protect our landfills and waterways, drugs should not be thrown away with your household trash nor by toilet flushing.

This drop-off service is available on a continual basis. Now that the public is once again able to access the Pine Grove Municipal Building, a safe and secure Red Box depository is available for this purpose.

The drugs will be properly disposed of during the Drug Take-Back Program. Contact the Pine Grove Police Department at the non-emergency number of 570-345-8100 with any questions or concerns.



Snow emergencies

When an official Snow Emergency is called in Pine Grove Borough, vehicles parked on streets designated as Snow Emergency Routes must be moved to allow for efficient and effective snow removal. Streets affected are East and West Mill, East Pottsville, Wood, North and South Tulpehocken, Orchard, and Snyder Avenue. Parking is available behind Borough Hall.

Spring cleanup in the Borough

As we move from winter to spring, homeowners will feel the urge to venture outside and begin the renewal of promising growth and greening of their property ... maybe even start planning this year's

flower and vegetable gardens.

Pine Grove Borough has already planned its spring cleanup of winter's dirt and grime. Residents and motorists should be on the lookout for these scheduled activities by its streets crew.

Street sweeping and storm drain pit cleaning will take place in the April and May time period. Street sweeper notices will be posted 24 hours in advance as each section is cleaned. Move vehicles so the street sweeper can be efficient and do an effective job.

Hydrant flushing will be conducted during May and June. Hydrant flushing allows the Borough to flush its fresh water system. Property owners may experience times of low water pressure and discolored water. Simply let your tap water run a few minutes until it becomes clear. Flushing also allows the Borough to monitor and maintain fire hydrants throughout the system.

Line painting of crosswalks and curb painting, where needed, will take place during May and June. Pedestrians are asked to cross streets at the crosswalks. Motorists are reminded it is state law to stop to allow pedestrians to cross the street when they present themselves in the designated crosswalk.

Curb painting is an important reminder to motorists when parking near an intersection. The yellow painted curbs indicate a "no parking" area to allow other motorists and pedestrians a safe view when attempting to cross an intersection.

Gabriel Chamber Ensemble



Final 2 Concerts of our 33rd Season

Sunday, Feb. 26 – Beethoven String Quartet & Mozart Piano Concerto

Sunday, April 2 – Brahms Sonatas & Elgar Piano Quintet

Adult – \$22 • Sr. Citizens – \$17
Free for All Students

Both concerts at Jerusalem Lutheran Church
252 Dock St., Schuylkill Haven at 3 p.m.

For more information, visit www.gabrielensemble.org;
email gce@gabrielensemble.org; or call 570-943-2558



Gabriel Chamber Ensemble

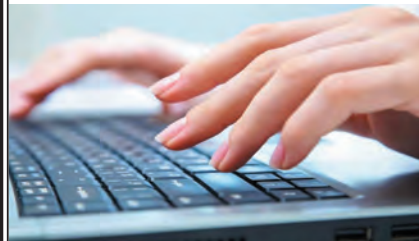


Gabriel Youth Orchestra

HB STEELE & SON

A DIVISION OF TEVIS ENERGY

Providing Year Round Comfort



Order Oil Online

www.hbsteele.com

570-366-1275

17 Municipal Road • Orwigsburg, PA 17961

Historical Society Preserves the Past

Stanhope Schoolhouse Prepares for 2023 Season

The Stanhope Schoolhouse has plans in place for a busy 2023 season. Restoration efforts at the one-room schoolhouse will continue and educational programs will be presented. Museum hours will be available to the public from May through September. Details can be found at www.PGHS-StanhopeSchool.org or www.facebook.com/StanhopeSchoolhouse.

Two Kutztown University elementary education students are working as interns during their spring semester. The purpose of the internship is to create a one-room schoolhouse lesson plan that will be of particular interest to students being homeschooled and elementary students studying PA history in fourth grade.

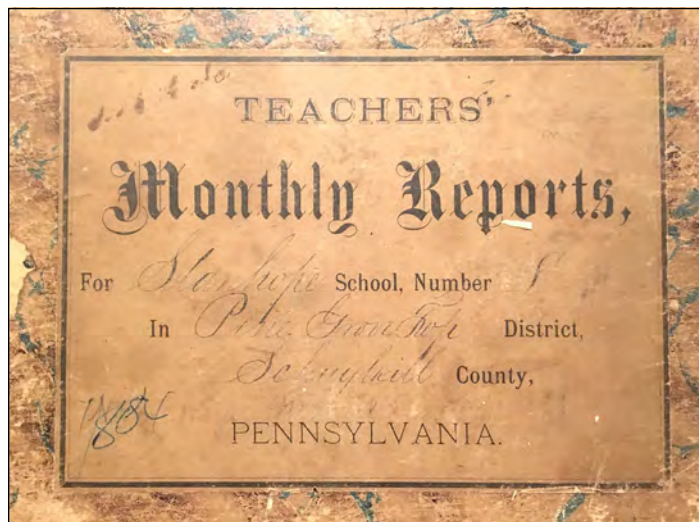
The interns will study how one-room schools operated from the perspective of teachers and students. Stanhope School alumni will be interviewed for first-hand accounts. In addition, one-room schoolhouses open to the public in the region will be studied to understand their interpretation of early education.

1882 Course of Study for teachers

From the Stanhope School Teacher's Monthly Reports Book, county Superintendent G.W. Weiss provided a Course of Study for the Elementary Schools of Schuylkill County. Below is the instruction to teachers on December 15, 1882 for the management of A

Division students - those 12 years of age and up.

MANAGEMENT OF A DIVISION - Length of exercises ... from twenty to thirty minutes. Combine and alternate recitations. Appeal to the highest motives of the pupils.



SUGGESTIONS - READING: First teach words, phrases, and sentences at sight; then find the sounds that the words contain; and afterwards, the names of the letters.

From the very first, require pupils to read in a natural and pleasing tone. See that pupils understand what they read. Give special attention to the meaning and use of words. Train pupils to think. Develop a taste for good reading. Give strict attention to position and carriage of body. Have an occasional lesson read from slate.

WRITING: Allow no printing. Teach script writing from the first. The teacher should now allow chart; First and Second Reader classes to copy their reading lesson or difficult words in reading lesson from the chart or reader.

But he, himself, should place on the blackboard, in the very best hand-writing, the words or portion of the lesson he desires his pupils to write, and let them copy on their slates from the blackboard. Drawing is more difficult to teach or learn than writing, and pupils will become better writers by taking lessons in drawing.

ARITHMETIC: Develop early the idea of numbers. Use objects ... first concrete then abstract. Drill in small numbers first. Exercise pupils in rapid reckoning.

Do not require pupils to memorize rules. Explain the principles to the advanced classes and teach them how to derive the rules. Give plenty of test examples. Review often. There are forty-five different combinations in addition.

GEOGRAPHY: Teach local geography first. Practice map-drawing. Associate history with geography.

Newsletter Particulars

"The Evergreen" is a quarterly newsletter of the Borough of Pine Grove distributed to 1500 households within the Borough.

The newsletter is designed and printed by South Schuylkill Printing & Publishing
960 E. Main St. • Schuylkill Haven, PA 17972

Ph: 570-385-3120 • Fax: 570-385-0725

E-mail: printing@southschuylkill.net

www.SouthSchuylkillPrinting.com

Publication dates for the next three issues are May 18, August 17, and November 9

News Submittals

Non-profit and community organizations within the Borough are invited to submit news items for consideration. Written submittals must be received by Melissa Dyer in the Borough offices, pgborough@comcast.net or call 570-345-3555 for info, three weeks prior to the publication date.

Advertising

Businesses wishing to reach every household in the Borough of Pine Grove are invited to advertise in future issues. Contact South Schuylkill Printing & Publishing for more information. Call Barb @ 570-385-3120. All advertisements must be received at least three weeks prior to the publication dates. Ad content is subject to approval and acceptance by the Borough of Pine Grove.

Historical Society Preserves the Past

LANGUAGE: In the lowest division, have conversational exercises with useful objects. This will teach pupils to observe and to think quickly and to express their thoughts in their own language. The teacher should rectify all incorrect expressions. Every recitation should be a lesson in language. Require statements and answers in full and complete sentences. Let the pupils learn to speak and write equally well.



ORAL LESSONS: These should be given as regular exercises, as well as incidentally. They include the elements of all the sciences – geometry, physics, physiology and hygiene, zoology, botany, vocal music, manners and morals. Teach by using objects when possible. Have pupils collect specimens of objects from the several kingdoms. Classify and label. Make them the subject of oral and written composition.

Require neatness, cleanliness, quietness, and politeness. Teach manners for the most part incidentally. Train pupils to be obedient, prompt and truthful. Make use of appropriate anecdotes; be true to nature; teach by example. Have on your desk some work on manners and morals. Make out a programme for recitations and studies, specifying the order and length of time for each class. Hang it in a conspicuous place. Try to follow it closely.

At the close of the term, lay in – in your monthly report book – and hand it to the secretary who will preserve it for your own or your successor's use the following term. You will also, at the close of term, prepare a list of the names of your pupils by classes and divisions, stating how far each scholar has advanced in the various branches. Hand it to the secretary who will return it to you or give to your successor the following term.

Keep your schoolroom neat and clean, and well ventilated. Have it with suitable pictures and flowering plants. For the purpose of planting trees and shrubbery in school yards, I would recommend the second Friday of April and the first Friday in November of each year as arbor days.

The following books are of invaluable assistance to teachers in their preparation for oral instruction: *Calkin's Primary Object Lessons* and *Calkin's Manual of Object Teaching*, Harper & Bro. N.Y.; Mrs. Knox's book (teacher's edition), "*How to Speak and Write Correctly*," published by Ginn & Heath, Boston; *Child S Book of Nature*, by Hooker, published by Harper & Bro., N.Y.; *Treasures of General Knowledge*, Van

Antwerp, Bragg & Co, Cincinnati, O.; *Science Primers*, by D. Appleton & Company, New York; *Little Gems of Literature*, by Potter, Ainsworth & Co., N.Y.; *Manners and Morals*, Alex M. Gow, New York; *Sheldon's Lessons on Objects*, Charles Scribner's Sons, N.Y.; *Dr. Brook's Normal Methods of Teaching*, Normal Publishing Co.; Lancaster, Pa.; *Dr. Raub's Method of Teaching*, Fireside Publishing Co., Philadelphia.

Upcoming Stanhope events

Plan time now to visit the Stanhope Schoolhouse in 2023, particularly engaging in the following:

- Saturday, April 29, 9:30 a.m. - ? - Spring clean-up
- Saturday, May 20, 1:30 to 2:30 p.m. - Educational program; 2:30 to 4:30 p.m. - museum open
- Sunday, June 11, 2 to 4 p.m. - Museum open
- Saturday, July 15, 1:30 to 2:30 p.m. - Educational program; 2:30 to 4:30 p.m. - Museum open
- Wednesday, July 19, all day - Dining fundraiser at Friedensburg Country Restaurant (paper coupon required).
- Sunday, August 13, 2 to 4 p.m. - Museum open
- Saturday, Sept. 23, 1:30 to 2:30 p.m. - Educational program; 2:30 to 4:30 p.m. - Museum open
- Wednesday, Sept. 27, all day - Dining fundraiser at Friedensburg Country Restaurant (paper coupon required).

FCCB
We Put the Unity in Community

45 West Main St. Schuylkill Haven 866-779-4102
1549 Long Run Rd. Friedensburg 866-779-4113

Serving Our Communities for Over 150 years

myfccb.com | (800) 326-9486

The complex block features the FCCB logo at the top, followed by the tagline "We Put the Unity in Community". Below this is a photograph of four diverse young people (three women and one man) working together in a garden, tending to plants. At the bottom, there is contact information for two locations: 45 West Main St. Schuylkill Haven (866-779-4102) and 1549 Long Run Rd. Friedensburg (866-779-4113). The text "Serving Our Communities for Over 150 years" is written in a cursive font, and the FDIC logo is present along with the website myfccb.com and phone number (800) 326-9486.



Borough of Pine Grove
1 Snyder Avenue • Pine Grove, PA 17963

Official Matter
of Pine Grove Borough

PRSR STD
ECRWSS
U.S. POSTAGE
PAID
EDDM RETAIL



****ECRWSS EDDM****

**LOCAL
POSTAL CUSTOMER**

A Friendly & Historic Community . . . Serving Its Residents • Welcoming Its Visitors

KRAMER'S SOLID ROCK DBA



**MULCH, SOIL,
DECORATIVE AND QUARRY STONE**

1770 Long Run Road
Schuylkill Haven, PA 17972

570-739-4770

www.TBLSupply.com

**Best Discount Prices on
Landscaping Rock, Mulch, and Installation
Services in Schuylkill County**

CALL US ABOUT QUANTITY DISCOUNTS

WE'VE GOT YOUR MATERIALS

MULCHES • SOILS • DECORATIVE STONE
DRIVEWAY AND DRAINAGE STONE • PLANTS
SAND • CERTIFIED PLAYGROUND MULCH
FIELDSTONE AND WALL STONE • STRAW
WEED BARRIER • LOAD HANDLER PRODUCTS

LANDSCAPING SERVICES

| | |
|----------------------|---------------|
| TRIMMING AND PRUNING | INSTALLATIONS |
| PLANTING | HARD SCAPING |
| MOWING | SNOW REMOVAL |
| MULCHING | SPRAYING |

CALL FOR HOURS

**\$30 OFF - \$25 PURCHASE
OR MORE**

WITH THIS AD - EXPIRES 12/31/23